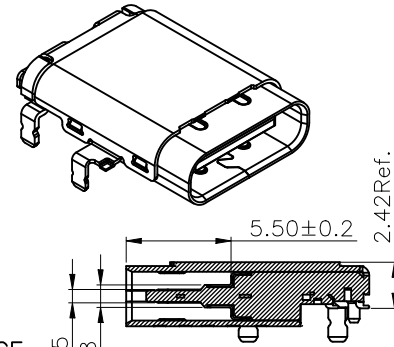
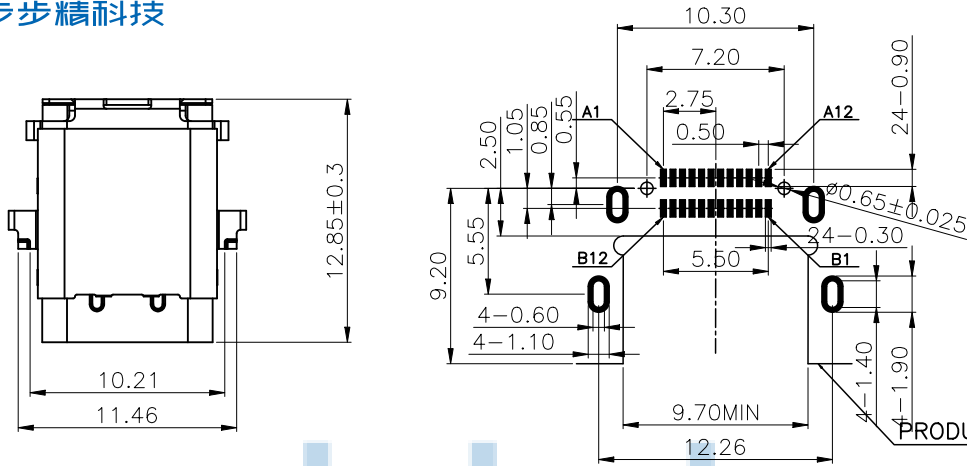


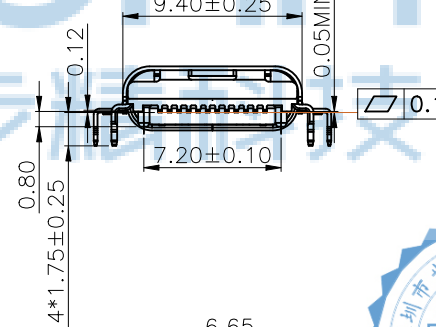
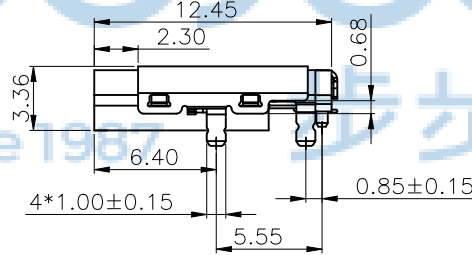
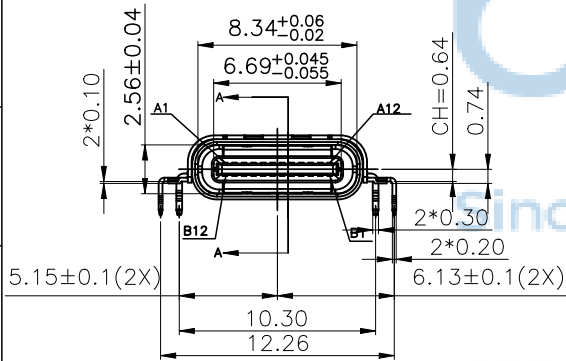
REV	ECN NO	CONTENT	DATE	ENGINEER
A0		INITIAL RELEASE	/	SGF



RECOMMENDED P.C.B. LAYOUT
TOLERANCE UNSPECIFIED ±0.05mm

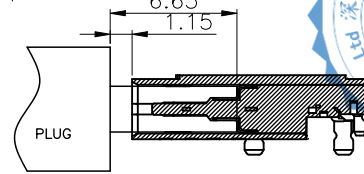
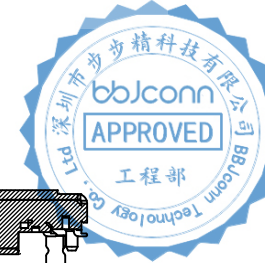
剖面图
比例 1:1 A-A

- MATERIAL:
HOUSING: LCP HIGH TEMPERATURE PLASTIC V-0, BLACK
CONTACT: C18150
SHELL: SUS304
SHELL: SUS304
EMI PLATE: SUS304
MID PLATE: SUS301
- PLATING SPECIFICATION:
2-1 CONTACT: COPPER ALLOY.
PLATED ON CONTACT AREA. SEE 1:
G/F PLATED ON SOLDER AREA,
N₁ 50u" MIN. UNDER PLATED OVER ALL.
2-2 SHELL: STAINLESS STEEL
50u" MIN NICKEL PLATING OVER ALL.
2-3 SHELL: STAINLESS STEEL
50u" MIN NICKEL PLATING OVER ALL.
2-4 EMI PLATE: MATERIAL
2-5 MID PLATE: MATERIAL
- MECHANICAL:
INSERTION: 5~20N.
EXTRACTION: 8~20N.
DURABILITY: 10000 CYCLES
- ELECTRICAL:
CURRENT: 5A MIN FOR VBUS; 1.25A MIN. FOR VCONN;
0.25A MIN FOR OTHER.
VOLTAGE: 5VAC MAX
WITHSTANDING VOLTAGE: 100V AC.
CONTACT RESISTANCE: 40mΩ MAX.
INSULATION RESISTANCE: 100MΩ MIN.
- ENVIRONMENTAL
TEMPERATURE RANGE -40°C ~ +120°C

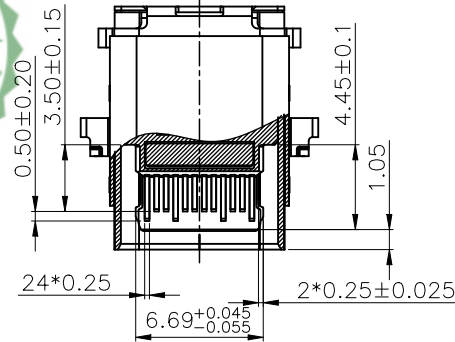
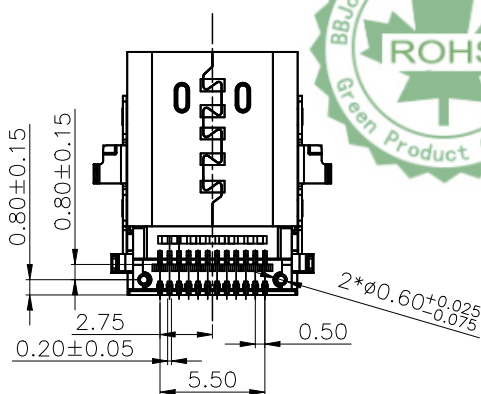


USB TYPE-C FULL-FEATURED RECEPTACLE INTERFACE PIN ASSIGNMENTS

PIN	Signal Name	Description	PIN	Signal Name	Description
A1	GND	Ground return	B12	GND	Ground return
A2	SSTxp1	Positive half of first SuperSpeed TX differential pair	B11	SSRxp1	Positive half of first SuperSpeed RX differential pair
A3	SSTxn1	Negative half of first SuperSpeed TX differential pair	B10	SSRxn1	Negative half of first SuperSpeed RX differential pair
A4	Vbus	Bus Power	B9	Vbus	Bus Power
A5	CC1	Configuration Channel	B8	SBU2	Sideband Use (SBU)
A6	Dp1	Positive half of the USB 2.0 differential pair-Position 1	B7	Dn2	Negative half of the USB 2.0 differential pair-Position 2
A7	Dn1	Negative half of the USB 2.0 differential pair-Position 1	B6	Dp2	Positive half of the USB 2.0 differential pair-Position 2
A8	SBU1	Sideband Use (SBU)	B5	CC2	Configuration Channel
A9	Vbus	Bus Power	B4	Vbus	Bus Power
A10	SSRx2	Negative half of second SuperSpeed RX differential pair	B3	SSTx2	Negative half of second SuperSpeed TX differential pair
A11	SSRx2	Positive half of second SuperSpeed RX differential pair	B2	SSTx2	Positive half of second SuperSpeed TX differential pair
A12	GND	Ground return	B1	GND	Ground return



AFTER MATING



THIS DOCUMENT IS THE
SOLE PROPERTY OF
BBJconn Technology Co., Ltd.
Corporation AND SHOULD
NOT BE USED IN WHOLE
PRIOR WRITTEN PERMISSION.

深圳市步步精科技有限公司

.X: ±0.38 X': ±3"
.XX: ±0.25 .X': ±2"
.XXX: ±0.13 .XX': ±1"

NAME: TYPE-C 24P 母座 沉板0.94 四脚插 带柱
双壳 双排端子SMT L=12.85 CH=0.64 编带

APPD JM_Zheng
CHKD LYX

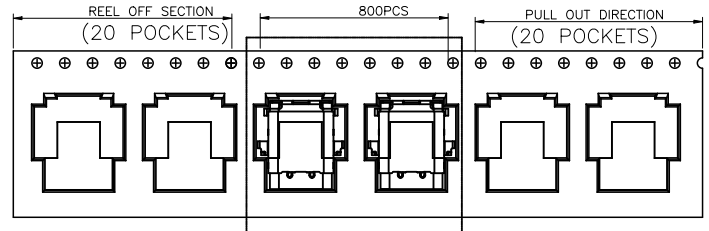
PJ NO: 126-221-240005-N5G
SIZE:A4 DRW NO:

PDWG NO: 0366-2
DR SGF

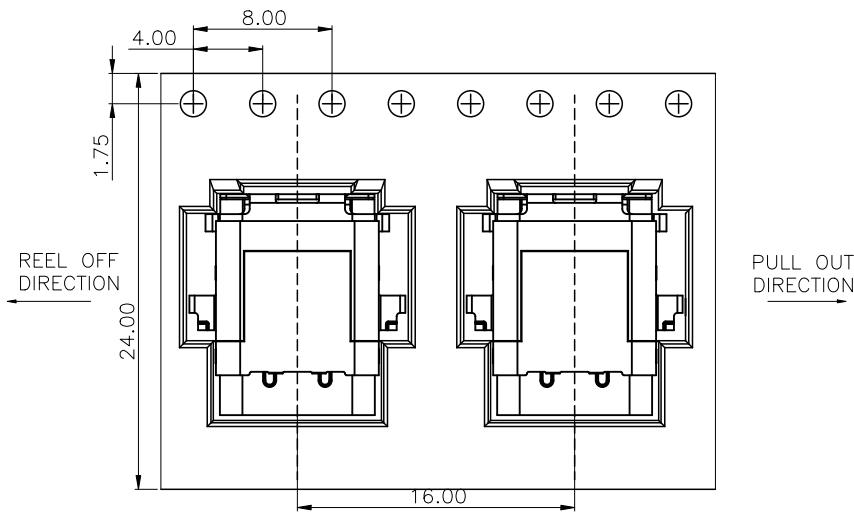
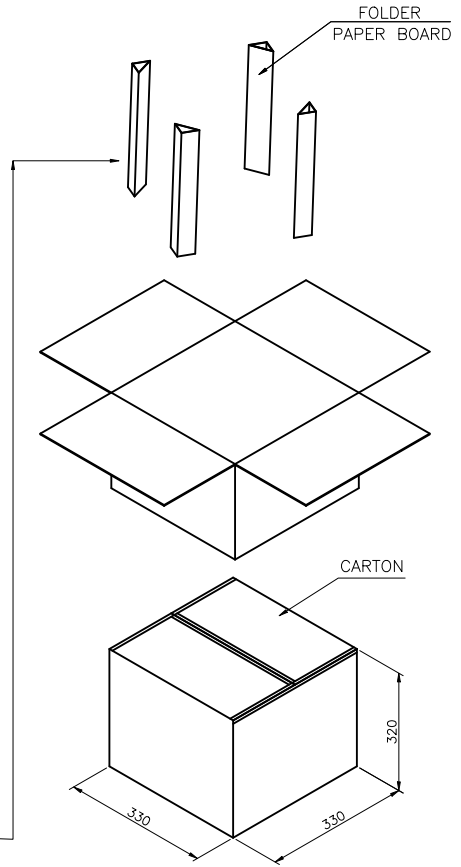
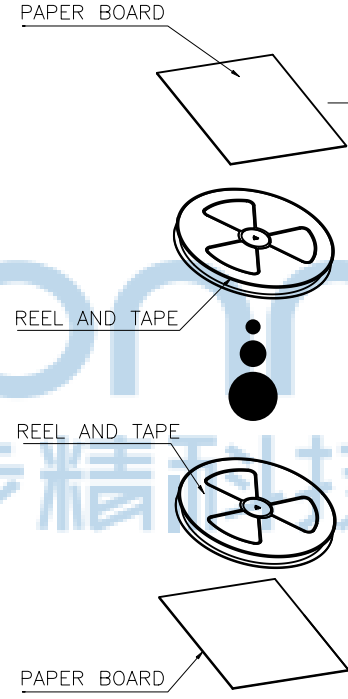
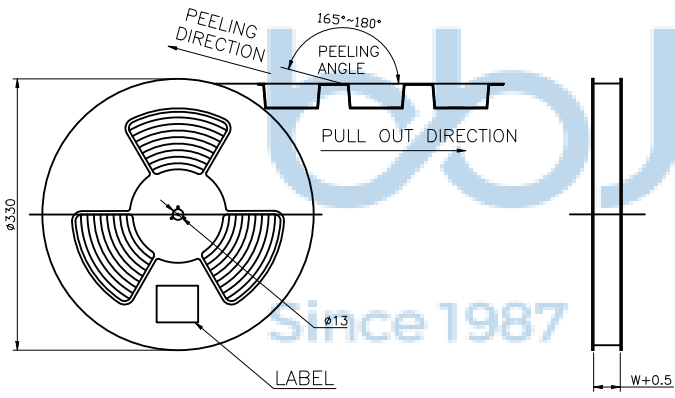
FINISH:SEE NOTES MAT'L:SEE NOTES
SCALE:N/A REV:A0 UNIT:mm PAGE:1/2



REV	ECN NO	CONTENT	DATE	ENGINEER
A0		INITIAL RELEASE	/	SGF



SEE DETAIL X



	REEL	CARTON
CONNECTOR (PCS)	800	8000

THIS DOCUMENT IS THE SOLE PROPERTY OF BBJconn Technology Co.,Ltd. Corporation AND SHOULD NOT BE USED IN WHOLE PRIOR WRITTEN PERMISSION.

PDWG NO: 0366-2

深圳市步步精科技有限公司

.X: ±0.38	X': ±3'	NAME: TYPE-C 24P 母座 沉板0.94 四脚插 带柱 双壳 双排端子SMT L=12.85 CH=0.64 编带
.XX: ±0.25	.X': ±2'	
.XXX: ±0.13	.XX': ±1'	
APPD	JM_Zheng	PJ NO: 126-221-240005-N5G
CHKD	LYX	SIZE:A4 DRW NO:
DR	SGF	FINISH:SEE NOTES MAT'L:SEE NOTES
		SCALE:N/A REV:A0 UNIT:mm PAGE:2/2