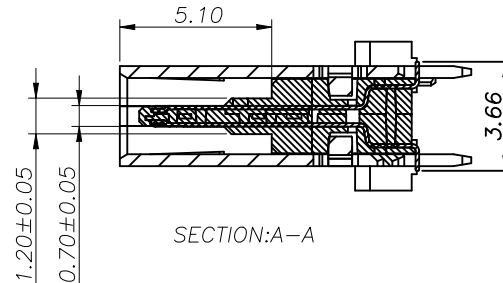
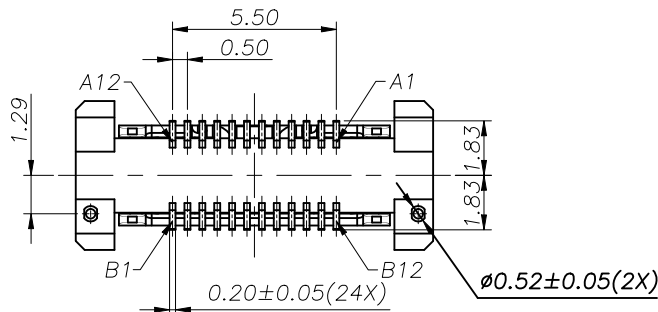
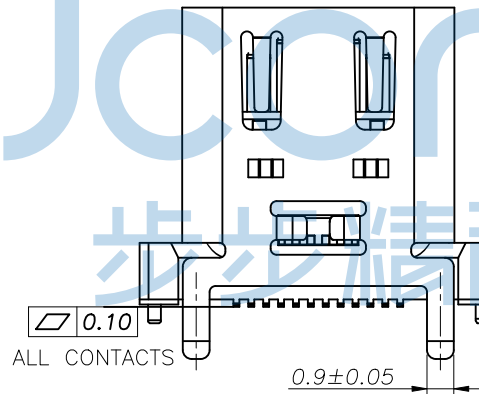
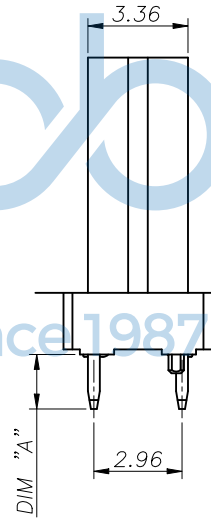
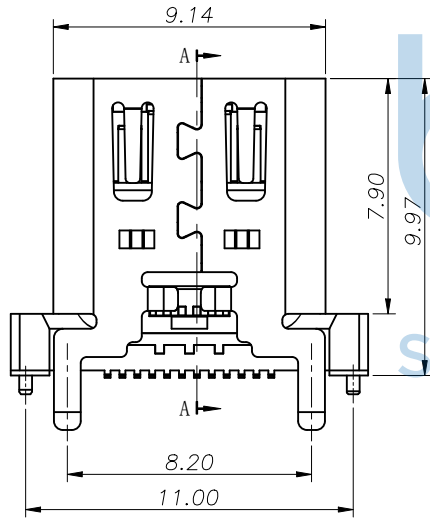
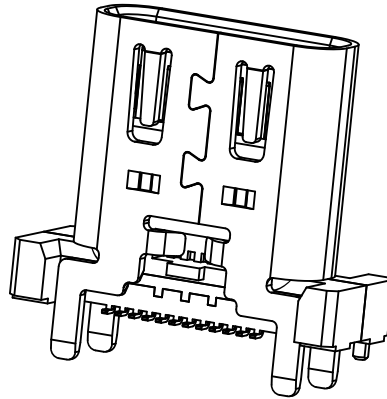
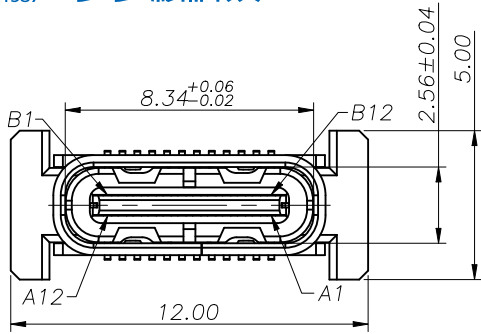


REV.	ECN NO	CONTENT	DATE	ENGINEER
A0		Initial release	/	TSP



- NOTE:
- MATERIAL SPECIFICATION:
    - HOUSING: LCP , BLUE UL94 V-0.
    - TERMINAL: COPPER ALLOY(C18150)
    - MID PLATE: STAINLESS STEEL(SUS301)
    - FRONT SHELL: STAINLESS STEEL(SUS304)
  - PLATING SPECIFICATION:
    - TERMINAL:
      - Ni 50u" MIN. UNDER PLATED OVER ALL.
      - Au G/F PLATED ON THE FUNCTIONAL AREA OF CONTACT.
    - SHELL:
      - Ni 50u" MIN. UNDER PLATED OVER ALL.
    - MID PLATE:
      - CLEAR ONLY
  - MECHANICAL PERFORMANCE,
    - INSERTION FORCE: 0.5~2.0kgf.
    - REMOVAL FORCE: 0.8kgf~2.0kgf.
    - DURABILITY: 10000 CYCLES.
  - ELECTRICAL PERFORMANCE,
    - VOLTAGE RATING:5 V DC/AC (RMS. max)  
CURRENT RATING:5 AMPS. FOR TOTAL VBUS/GND PINS;  
1.25AMPS FOR CC PIN,0.25 AMPS. FOR ALL OTHER CONTACT.
    - LLCR:
      - VBUS & GND PINS AND OTHER PINS: 40ma/PIN MAX.
      - LLCR MAX. CHANGE OF ALL PINS: 10ma.
    - INSULATION RESISTANCE: 100M $\Omega$  MIN
    - DIELECTRIC WITHSTAND VOLTAGE,AC 100V FOR 1 MINUTE.
  - ENVIRONMENTAL PERFORMANCE:
    - OPERATING TEMPERATURE: -25°C~+85°C.
  - IR REFLOW:
    - THE PEAK TEMPERATURE ON THE BOARD SHALL BE MAINTAINED FOR 10 SECONDS AT 260°C.



1.30
1.83
DIM A

THIS DOCUMENT IS THE  
SOLE PROPERTY OF  
BBJconn Technology Co.,Ltd.  
Corporation AND SHOULD  
NOT BE USED IN WHOLE  
OR IN PART WITHOUT  
PRIOR WRITTEN PERMISSION.  
PDWG.NO: 0470-1

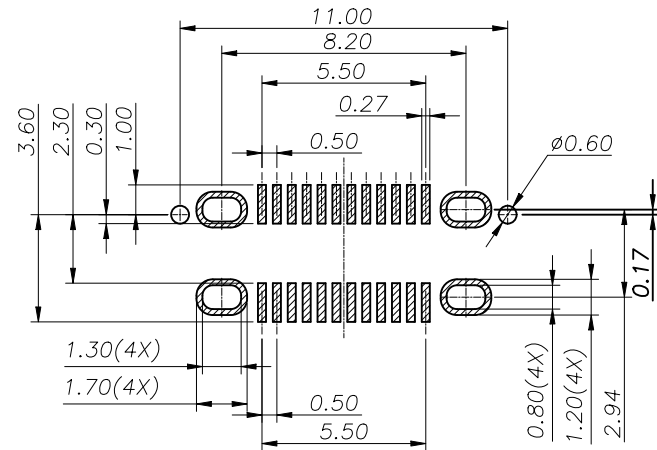
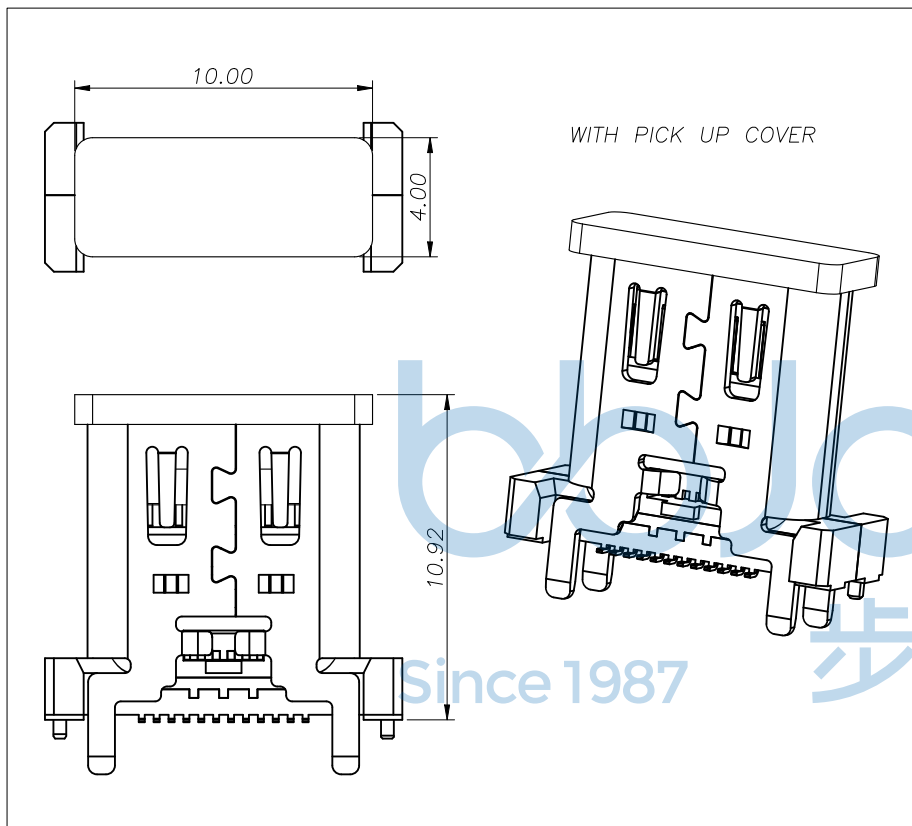
**深圳市步步精科技有限公司**

NAME: USB 3.2 TYPE-C 24P 母座 直立式 四脚插 带柱  
外壳带弹 外壳脚长1.83 端子SMT H=10.0 PT 2995C蓝胶 编带

APPD. JM\_Zheng  
CHKD. LYX  
DR. TSP

PJ. NO.: UC.01.62-1W-0029  
SIZE: A4 DRW NO.:  
FINISH: SEE NOTES MAT'L.: SEE NOTES  
SCALE: N/A REV.: A0 UNIT: mm PAGE: 1/3

REV.	ECN NO	CONTENT	DATE	ENGINEER
A0		Initial release	/	TSP



RECOMMENDED PCB LAYOUT(TOP VIEW)  
THICKNESS 1.0±0.10MM;DEFAULT TOLERANCE:±0.05

USB TYPE-C PIN ASSIGNMENTS

PIN NUMBER	SIGNAL NAME	PIN NUMBER	SIGNAL NAME
A1	GND	B12	GND
A2	SSTXp1	B11	SSRXp1
A3	SSTXn1	B10	SSRXn1
A4	Vbus	B9	Vbus
A5	CC1	B8	SBU2
A6	Dp1	B7	Dn2
A7	Dn1	B6	Dp2
A8	SBU1	B5	CC2
A9	Vbus	B4	Vbus
A10	SSRXn2	B3	SSTXn2
A11	SSRXp2	B2	SSTXp2
A12	GND	B1	GND

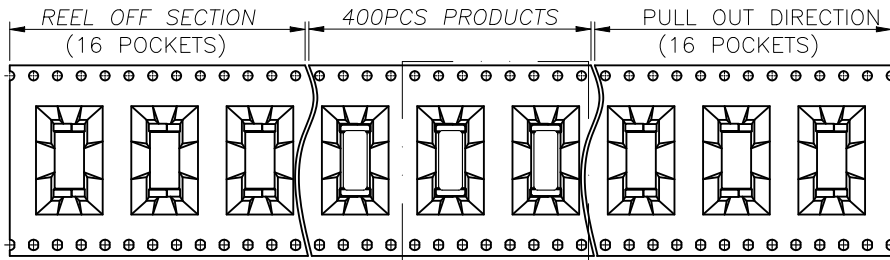


THIS DOCUMENT IS THE SOLE PROPERTY OF BBJconn Technology Co., Ltd. Corporation AND SHOULD NOT BE USED IN WHOLE OR IN PART WITHOUT PRIOR WRITTEN PERMISSION.  
PDWG.NO: 0470-1

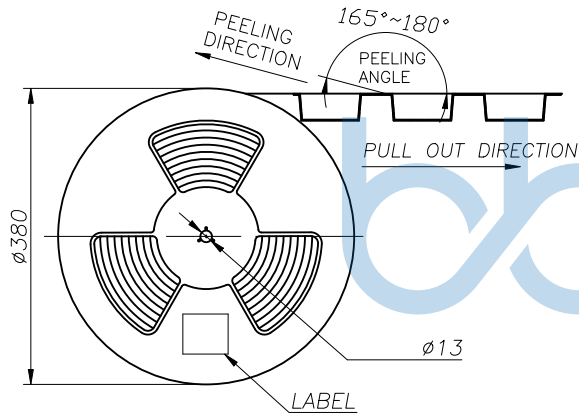
**深圳市步步精科技有限公司**

.X: ±0.38 .XX: ±0.25 .XXX: ±0.13	X': ±3" .X': ±2" .XX': ±1"	NAME: USB 3.2 TYPE-C 24P 母座 直立式 四脚插 带柱 外壳带弹 外壳脚长1.83 端子SMT H=10.0 PT 2995C蓝胶 编带
APPD. JM_Zheng	CHKD. LYX	PJ. NO.: UC.01.62-1W-0029 SIZE: A4 DRW NO.:
DR. TSP		FINISH: SEE NOTES MAT'L.: SEE NOTES SCALE: N/A REV.: A0 UNIT: mm PAGE: 2/3

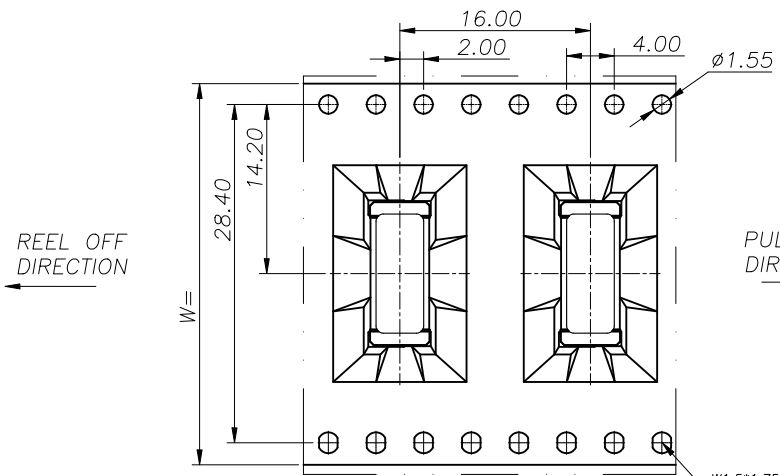
REV.	ECN NO	CONTENT	DATE	ENGINEER
A0		Initial release	/	TSP



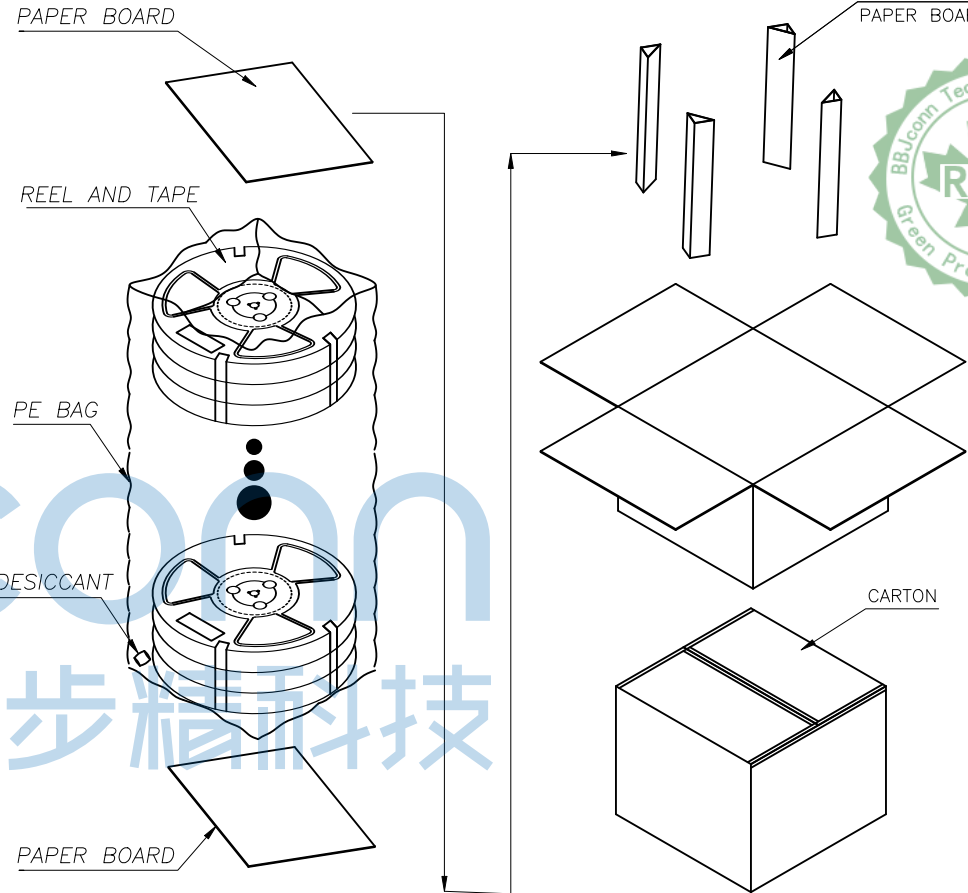
SEE DETAIL X



W+0.5



DETAIL X



	REEL/TRAY	CARTON
CONNECTOR (PCS)	400	3200

THIS DOCUMENT IS THE SOLE PROPERTY OF BBJconn Technology Co., Ltd. Corporation AND SHOULD NOT BE USED IN WHOLE OR IN PART WITHOUT PRIOR WRITTEN PERMISSION.

PDWG.NO: 0470-1

APPD. JM\_Zheng  
CHKD. LYX  
DR. TSP

深圳市步步精科技有限公司

.X:  $\pm 0.38$  .XX:  $\pm 0.25$  .XXX:  $\pm 0.13$  X':  $\pm 3'$  X'':  $\pm 2'$  X''':  $\pm 1'$

NAME: USB 3.2 TYPE-C 24P 母座 直立式 四脚插 带柱 外壳带弹 外壳脚长1.83 端子SMT H=10.0 PT 2995C蓝胶 编带

PJ. NO.: UC.01.62-1W-0029  
SIZE: A4 DRW NO.:

FINISH: SEE NOTES MAT'L.: SEE NOTES  
SCALE: N/A REV.: A0 UNIT: mm PAGE: 3/3