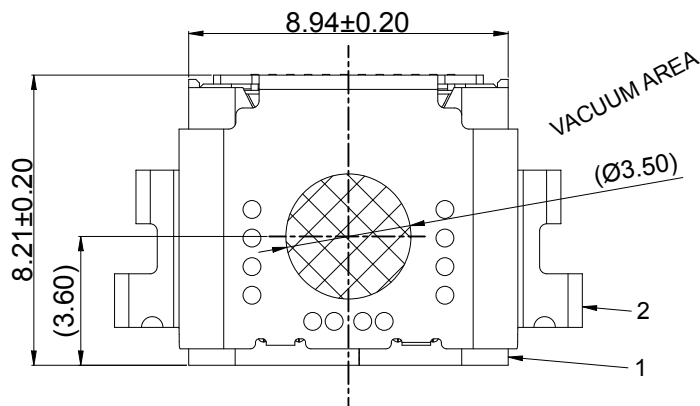
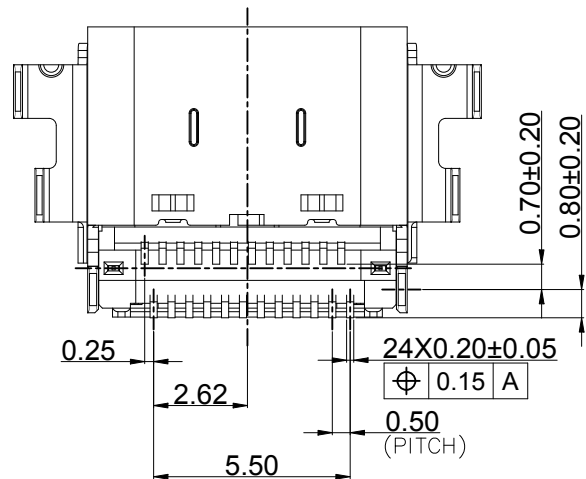
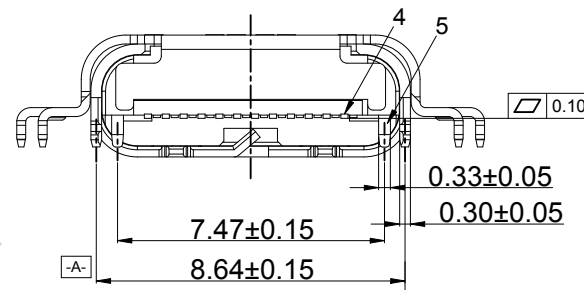
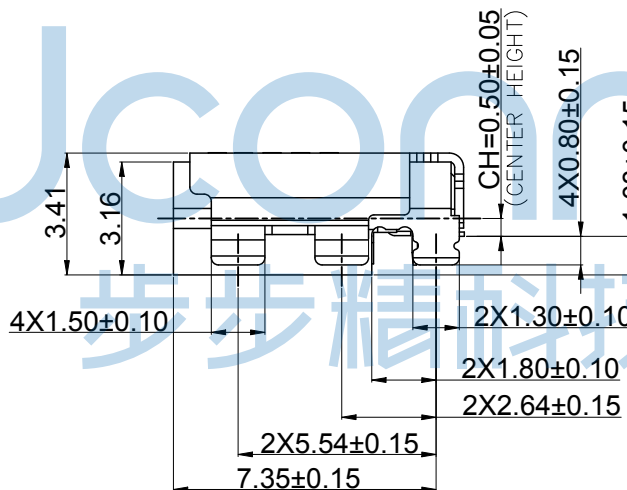
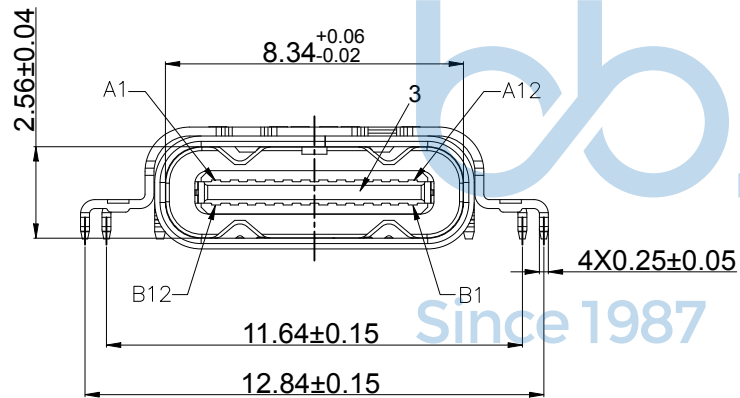


REV.	ECN NO	CONTENT	DATE	ENGINEER
A0		Initial release	/	TSP



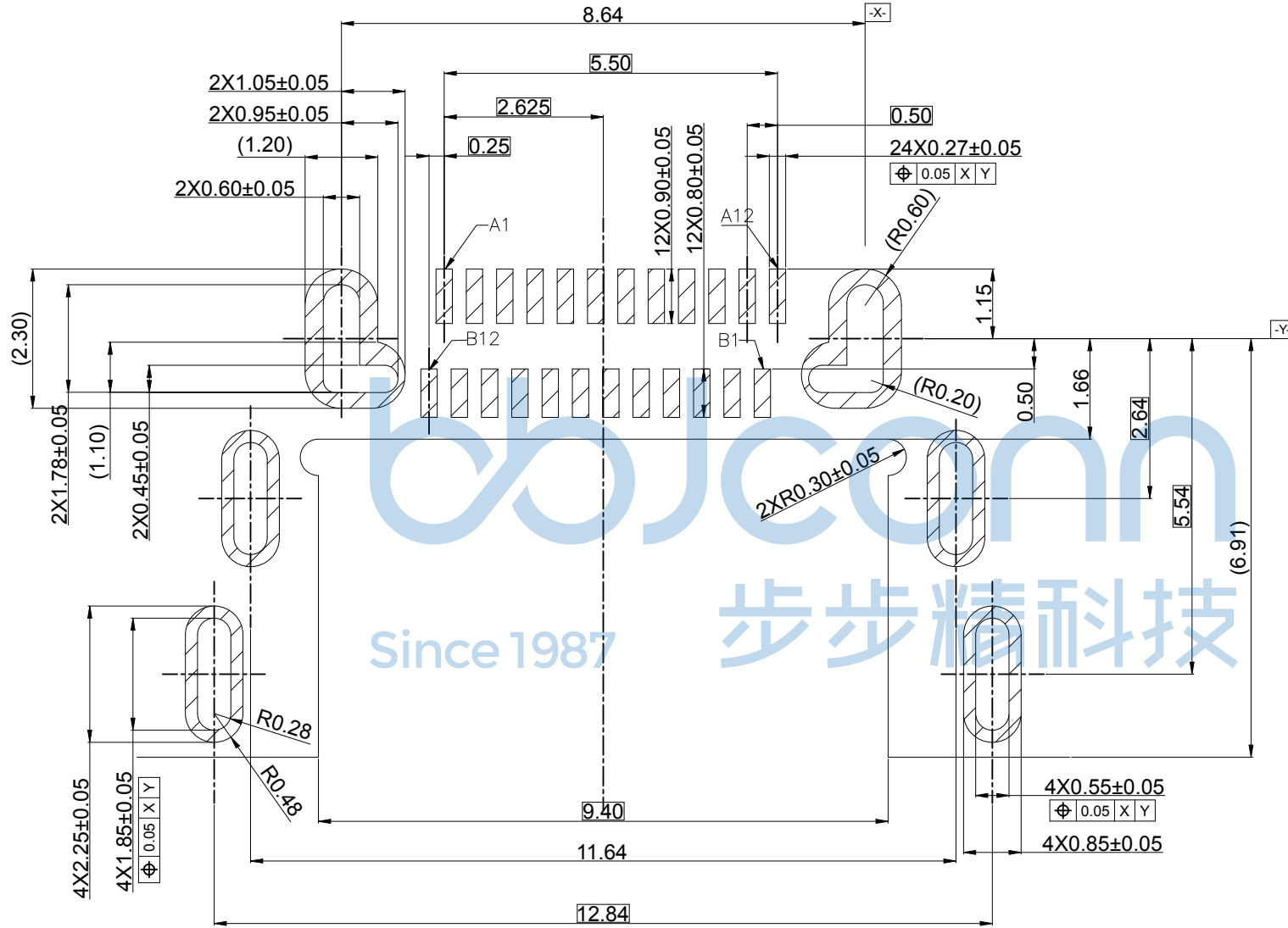
NOTE/注释:

- SPECIFICATION/规格:
 - Rated current (额定电流): 5.0 A
 - Voltage rating (额定电压): 5V AC
 - Contact Resistance (接触阻抗): 40 m Ω Max.
 - Insulation Resistance (绝缘阻抗): 100MΩ Min.
 - Withstanding voltage (耐电压): 100 VAC/minute
 - Mating force (插入力): 5~20N.
 - Unmating force (拔出力): 8~20N.
 - Durability Cycle(寿命循环): 10,000 cycle
 - Operating temperature (工作温度): -40°~+85°



ITEM	DESCRIPTION	QTY	MATERIAL	FINISH	REMARK
5	MID PLATE	1	SUS301	NICKEL PLATING	T=0.15
4	TERMINAL	24	C18140	MATING SIDE: Au 30u"MIN; SOLDER TAIL: Gold FLASH, 50u" NICKEL OVERALL.	T=0.12
3	MAIN HOUSING	1	PA9T HF 30%玻纤, UL94 V-0, 黑色		BLACK UL94V-0
2	OUT SHELL	1	SUS304	NICKEL PLATING	T=0.25
1	MAIN SHELL	1	SUS304	NICKEL PLATING	T=0.30

BILL OF MATERIAL					
THIS DOCUMENT IS THE SOLE PROPERTY OF BBJconn Technology Co., Ltd. Corporation AND SHOULD NOT BE USED IN WHOLE OR IN PART WITHOUT PRIOR WRITTEN PERMISSION.			深圳市步步精科技有限公司 工程部 APPROVED		
.X: ±0.38 .XX: ±0.25 .XXX: ±0.13		X': ±3" .X': ±2" .XX': ±1"		NAME: TYPE-C 24P 母座 六脚插 沉板1.08 L=8.21 CH=0.50 端子双排SMT 双壳	
APPD.	JM_Zheng	PJ. NO.: 126-221-240026-J8G		SIZE: A4 DRW NO.:	
CHKD.	LYX	FINISH: SEE NOTES		MAT'L.: SEE NOTES	
PDWG.NO:	0643-2	DR.	TSP	SCALE: N/A	REV.: A0 UNIT: mm PAGE: 1/3

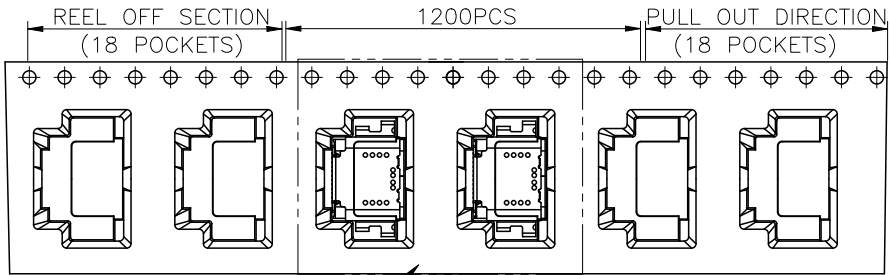


PIN ASSIGNMENT

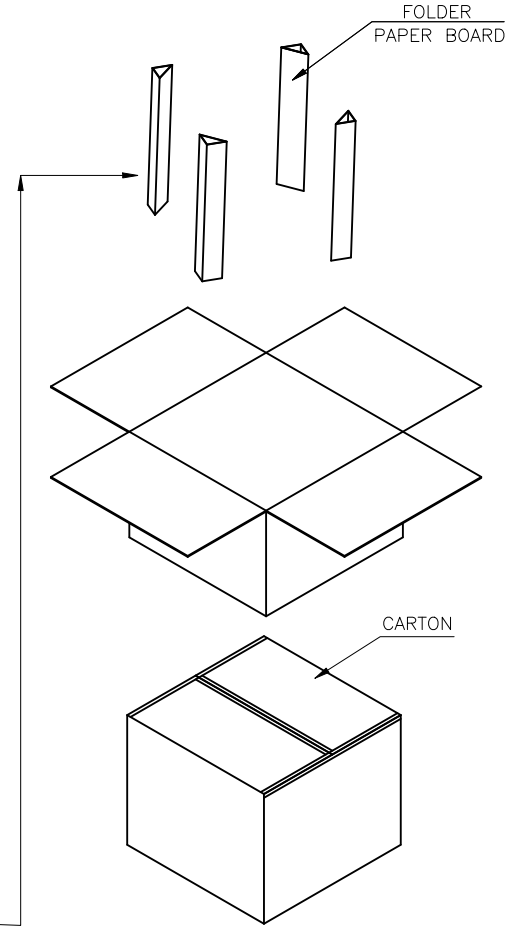
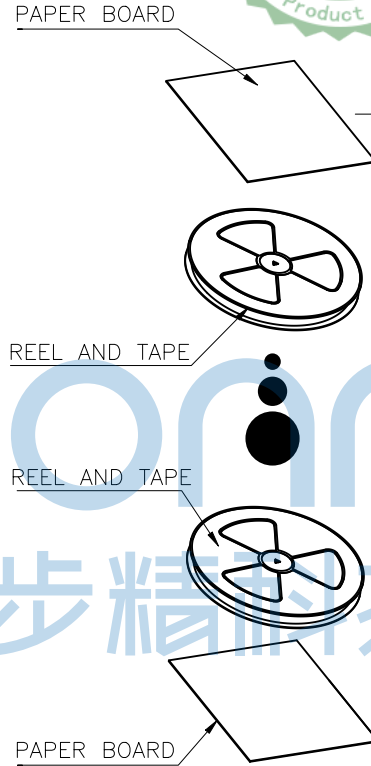
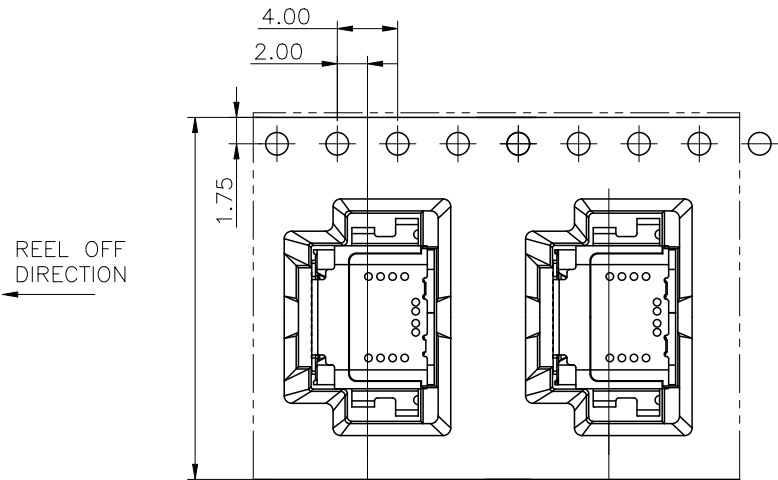
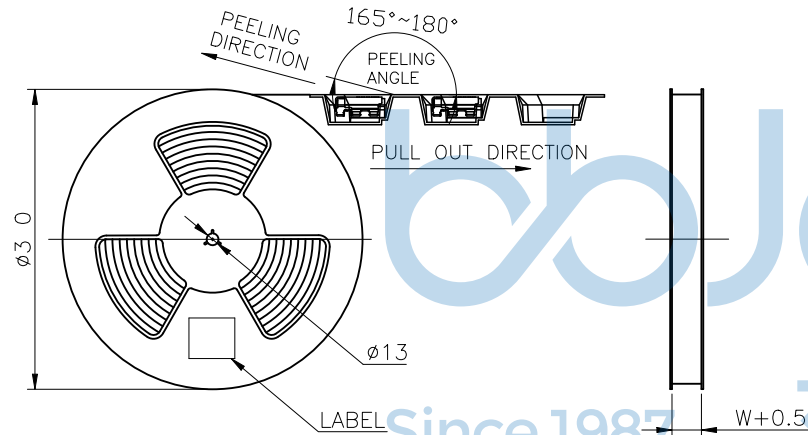
A1	A2	A3	A4	A5	A6	A7	A8	A9	A10	A11	A12
GND	TX1+	TX1-	Vbus	CC1	D+	D-	SBU1	Vbus	RX2-	RX2+	GND
B12	B11	B10	B9	B8	B7	B6	B5	B4	B3	B2	B1

THIS DOCUMENT IS THE SOLE PROPERTY OF BBJconn Technology Co., Ltd. Corporation AND SHOULD NOT BE USED IN WHOLE OR IN PART WITHOUT PRIOR WRITTEN PERMISSION.		深圳市步步精科技有限公司	
.X: ±0.38 .XX: ±0.25 .XXX: ±0.13		X': ±3' .X': ±2' .XX': ±1'	
NAME: TYPE-C 24P 母座 六脚插 沉板1.08 L=8.21 CH=0.50 端子双排SMT 双壳		PJ. NO.: 126-221-240026-J8G	
APPD. JM_Zheng		SIZE: A4 DRW NO.:	
CHKD. LYX		FINISH: SEE NOTES MAT'L.: SEE NOTES	
PDWG.NO: 0643-2		DR. TSP	
SCALE: N/A		REV.: A0	
UNIT: mm		PAGE: 2/3	

REV.	ECN NO	CONTENT	DATE	ENGINEER
A0		Initial release	/	TSP



SEE DETAIL X



	REEL	CARTON
CONNECTOR (PCS)	1200	12000

THIS DOCUMENT IS THE SOLE PROPERTY OF BBJconn Technology Co.,Ltd. Corporation AND SHOULD NOT BE USED IN WHOLE OR IN PART WITHOUT PRIOR WRITTEN PERMISSION.
 PDWG.NO: 0643-2

深圳市步步精科技有限公司

.X: ± 0.38	X': $\pm 3'$	NAME: TYPE-C 24P 母座 六脚插 沉板1.08 L=8.21 CH=0.50 端子双排SMT 双壳
.XX: ± 0.25	.X': $\pm 2'$	
.XXX: ± 0.13	.XX': $\pm 1'$	
APPD. JM_Zheng		PJ. NO.: 126-221-240026-J8G
CHKD. LYX		SIZE: A4 DRW NO.:
DR. TSP		FINISH: SEE NOTES MAT'L.: SEE NOTES
		SCALE: N/A REV.: A0 UNIT: mm PAGE: 3/3