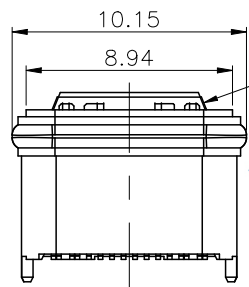
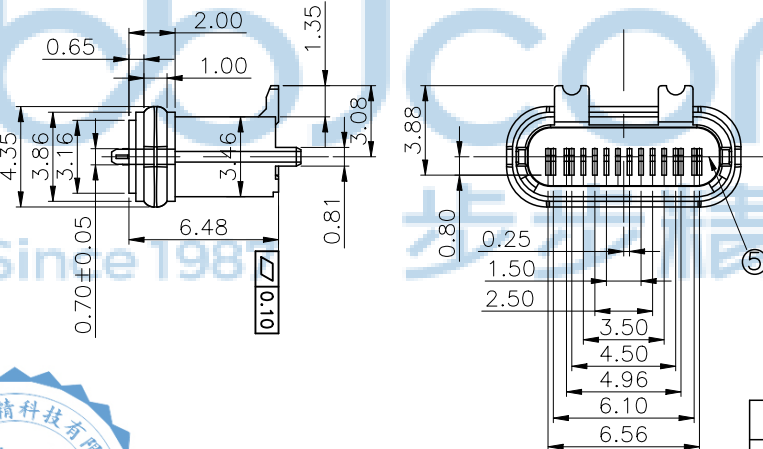
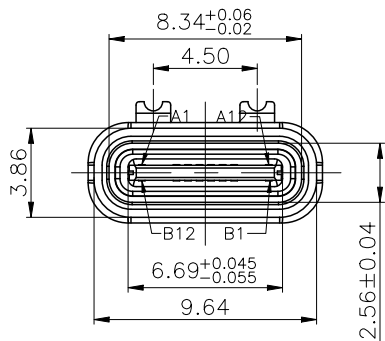
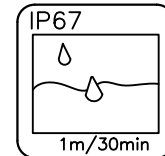
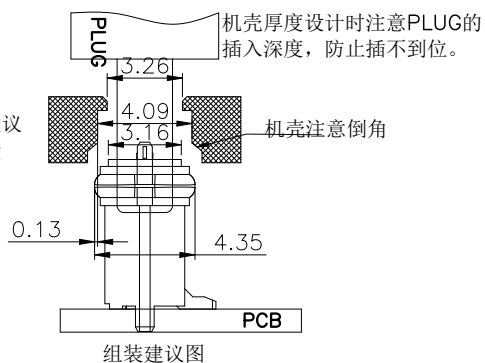


- MECHANICAL PERFORMANCE,
 - INSERTION FORCE: 5~20N.
 - REMOVAL FORCE: 6~20N.
 - DURABILITY: 10000 CYCLES.
- ELECTRICAL PERFORMANCE,
 - CURRENT RATING:3.0A
VOLTAGE RATING:12V
 - LLCR:
VBUS & GND PINS AND OTHER PINS: 40mΩ /PIN MAX.
SHIELD: 50mΩ /MAX.
 - INSULATION RESISTANCE: 100MΩ MIN
 - DIELECTRIC WITHSTAND VOLTAGE,AC 100V FOR 1 MINUTE.
- ENVIRONMENTAL PERFORMANCE:
OPERATING TEMPERATURE: -25°C~+85°C.
- IR REFLOW:
THE PEAK TEMPERATURE ON THE BOARD SHALL BE MAINTAINED FOR 10 SECONDS AT 260°C.



胶圈与机壳建议
周边干涉量



6	SHIELDING PLATE	STAINLESS STEEL		1PCS
5	Epoxy		BLACK	
4	O RING	SILICA GEL	White	1PCS
3	CONTACT	C7025	AU 3u" On Contact Area And Solder Tail Area, All over Nickel Plated	16SET
2	SHELL	zinc alloy	NI Plated	1PCS
1	HOUSING	PA10T	BLACK	1PCS
NO.	DESCRIPTION	MATERIAL	REMARKS	QTY

USB TYPE-C PIN ASSIGNMENTS

PIN NUMBER	SIGNAL NAME	PIN NUMBER	SIGNAL NAME
A1	GND	B12	GND
A4	VBUS	B9	VBUS
A5	CC1	B8	SBU2
A6	Dp1	B7	Dn2
A7	Dn1	B6	Dp2
A8	SBU1	B5	CC2
A9	VBUS	B4	VBUS
A12	GND	B1	GND

THIS DOCUMENT IS THE
SOLE PROPERTY OF
BBJconn Technology Co.,Ltd.
Corporation AND SHOULD
NOT BE USED IN WHOLE
PRIOR WRITTEN PERMISSION.

深圳市步步精科技有限公司

.X: ±0.38 X': ±3"
.XX: ±0.25 .X': ±2"
.XXX: ±0.13 .XX': ±1"

NAME: TYPE-C 16P 防水母座 直立式 两脚插两脚
贴 H=6.48 舌片外露0.75 IPX7 编带

APPD JM_Zheng

PJ NO: 126-226-160001-N6G

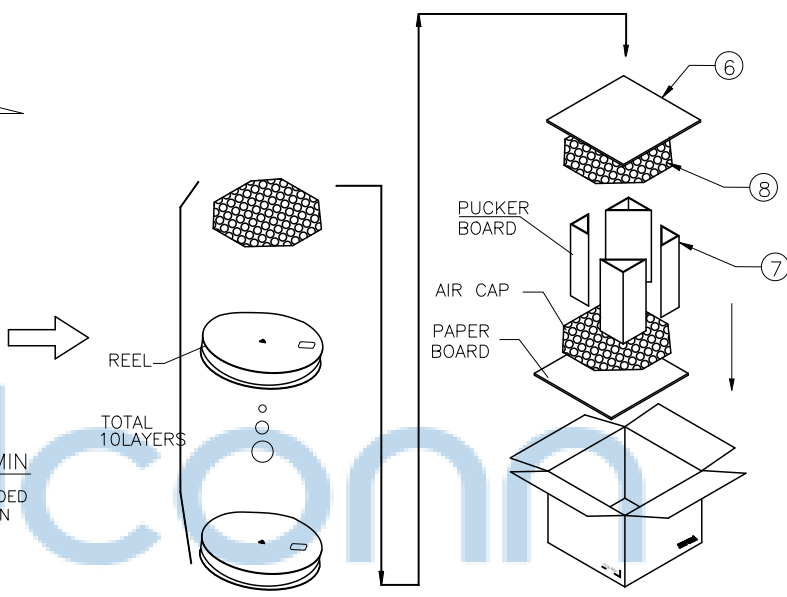
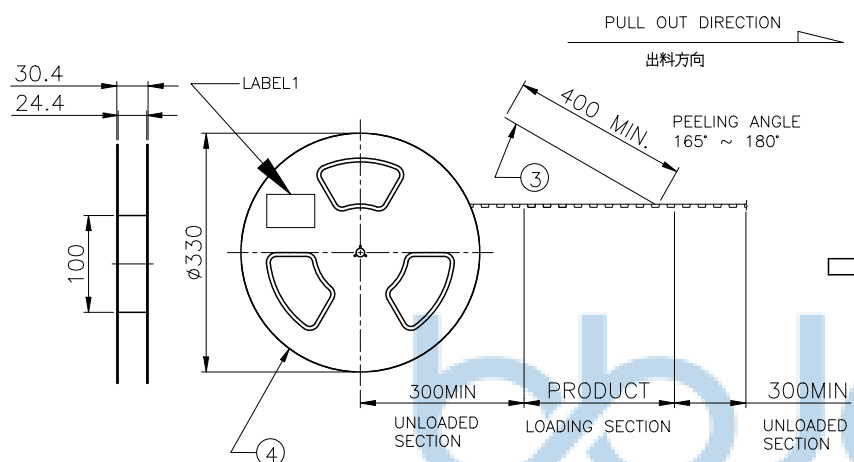
CHKD LYX

SIZE:A4 DRW NO:

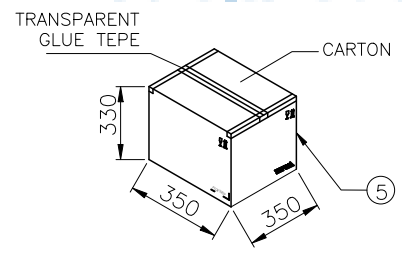
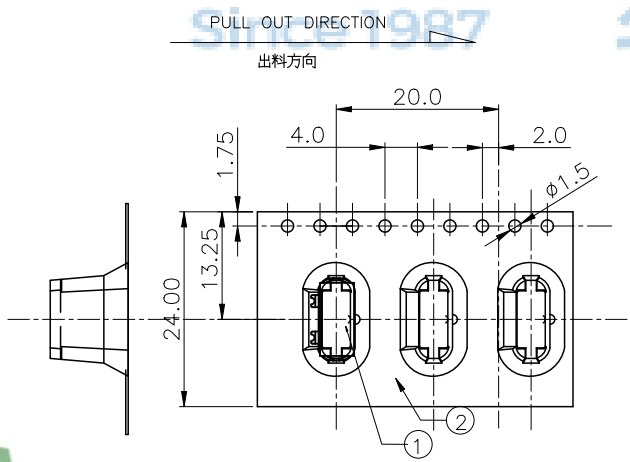
PDWG NO: 0514-1 DR SGF

FINISH:SEE NOTES MAT'L:SEE NOTES
SCALE:N/A REV:A0 UNIT:mm PAGE:1/2

REV	ECN NO	CONTENT	DATE	ENGINEER
A0		INITIAL RELEASE	/	SGF



- 备注:
1. 包装方式
1-1: 使用半自动包装机, 先将 CARRY TAPE 送入导轨中, 并与 COVER TAPE 贴合在上面, 其中前端大于10空槽不要放产品, 尾端大于10空槽不要放产品, 然后将产品如图示方向依次放入 CARRY TAPE 每个槽放1PCS;
1.2. 用胶带将 CARRY TAPE 压合在一起, 真空包装后在图示指定位置贴上 LABEL;
1-3: 按图示要求将10盘包装好的 REEL套入防水袋后装入纸箱, 纸箱上下按图示要求加垫硬纸板和海绵垫, 四角折三角垫固定;
1-4: 将装好产品的纸箱按图示要求封箱, 在指定区域贴好 LABEL;
 2. 包装数量:
600PCS/REEL;
10REEL (6000PCS)/CARTON.
 3. 耐剥离性:
上带引拔力测试规格: 20-150gf
测试条件: 以每分钟300mm速度引拔测试



8	气泡垫	L=345, W=345, T=10	2PCS
7	纸板 (折三角垫)	L=430, W=330, T=6	4PCS
6	硬纸板	L=330, W=330, T=6	2PCS
5	外箱	L=350, W=350, H=330	1PCS
4	卷盘	PS, BLUE, A=330, B=100, W=32.4	10PCS
3	上带	PET, CLEAR, W=21.3	7.6m
2	载带	PS, BLACK, W=24, T=0.4, P=16	7.6m
1	USB CONN	USB CONN	6000PCS
NO.	NAME	SPEC	Q' TY



THIS DOCUMENT IS THE SOLE PROPERTY OF BBJconn Technology Co.,Ltd. Corporation AND SHOULD NOT BE USED IN WHOLE PRIOR WRITTEN PERMISSION.

PDWG NO: 0514-1

深圳市步步精科技有限公司

NAME: TYPE-C 16P 防水母座 直立式 两脚插两脚 贴 H=6.48 舌片外露0.75 IPX7 编带

PJ NO: 126-226-160001-N6G

SIZE:A4 | DRW NO:

FINISH:SEE NOTES | MAT'L:SEE NOTES

SCALE:N/A | REV:A0 | UNIT:mm | PAGE:2/2

APPD	JM_Zheng
CHKD	LYX
DR	SGF